

A

2) Řešte v R soustavy rovnic:

$$x^2 - 9x + 14 \leq 0 \wedge 3x - 9 > 0$$

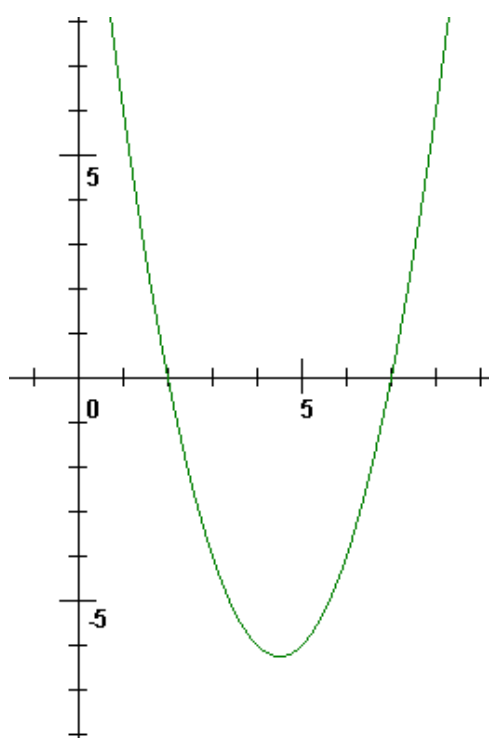
$$x^2 - 9x + 14 \leq 0$$

b)  $D = 81 - 56 = 25$

$$x_{1,2} = \frac{9 \pm 5}{2} \Rightarrow x_1 = 7, \quad x_2 = 2$$

$$3x - 9 > 0$$

$$x > 3$$



$$P = \langle 2, 7 \rangle \cap (3, \infty) = (3, 7)$$

[Zpět:](#)

[Další:](#)